

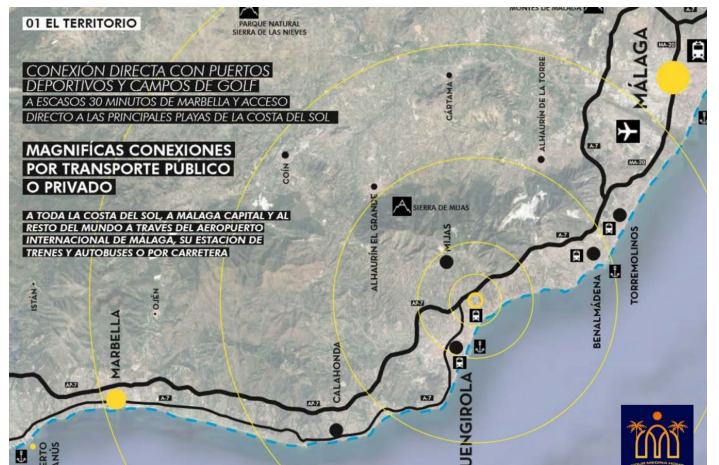
Residential Plot for sale in Torreblanca, Fuengirola

1,250,000 €

Reference: R4358851 Plot Size: 5,100m²



UNIDAD 01 Parcela: 344,57 m ² Total construida: 343,59 m ²	UNIDAD 02 Parcela: 252,80 m ² Total construida: 343,59 m ²	UNIDAD 03 Parcela: 252,79 m ² Total construida: 343,59 m ²	UNIDAD 04 Parcela: 271,05 m ² Total construida: 343,59 m ²
UNIDAD 05 Parcela: 333,97 m ² Total construida: 343,59 m ²	UNIDAD 06 Parcela: 255,17 m ² Total construida: 343,59 m ²	UNIDAD 07 Parcela: 252,79 m ² Total construida: 343,59 m ²	UNIDAD 08 Parcela: 330,07 m ² Total construida: 343,59 m ²
UNIDAD 09 Parcela: 252,31 m ² Total construida: 343,59 m ²	UNIDAD 10 Parcela: 252,39 m ² Total construida: 343,59 m ²	UNIDAD 11 Parcela: 254,81 m ² Total construida: 343,59 m ²	UNIDAD 12 Parcela: 252,30 m ² Total construida: 343,59 m ²



Este proyecto de urbanización está sujeto a la aprobación de la Junta de Urbanismo de Fuengirola, Málaga, y a la aprobación de la Junta de Urbanismo de Málaga, Málaga. El presente proyecto de urbanización está sujeto a la aprobación de la Junta de Urbanismo de Fuengirola, Málaga, y a la aprobación de la Junta de Urbanismo de Málaga, Málaga. El presente proyecto de urbanización está sujeto a la aprobación de la Junta de Urbanismo de Fuengirola, Málaga, y a la aprobación de la Junta de Urbanismo de Málaga, Málaga.

Costa del Sol, Torreblanca

Great investment opportunity - Two urban plots for sale.

1st Urban plot of 1600m for the construction of 5-6 chalets with panoramic views of the sea and the mountains with a favorable pre-project presented to the town hall.

2nd Urban plot of 3500m for the construction of an urbanization of up to 12 villas with direct views of the sea and enough space to build common areas, swimming pools, gardens, etc.

This project allows an occupation of 20% and 40% of the building with the possibility of increasing the building by delivering a part of the plots to the council.

The plots are located in one of the best locations in Torreblanca, and in which access to it directly from the A-7 is scheduled to open in a few months.

The purchase of the lots can be done both separately and jointly. Project with great profitability since there are no longer lots of these surfaces.

Features:

Features

Private Terrace

Basement

Views

Sea

Mountain

Panoramic

Garden

Pool

Courtyard

Street

Pool

Room for Pool

Private

Garden

Private

Orientation

South

West

Setting

Urbanisation

Close To Sea

Close To Schools

Climate Control

Air Conditioning

Pre Installed A/C

Condition

New Construction

Furniture

Not Furnished

Kitchen

Partially Fitted

Parking

Garage

Private

Utilities

Electricity

Drinkable Water

Photovoltaic solar panels

Solar water heating

Category

Investment

With Planning Permission