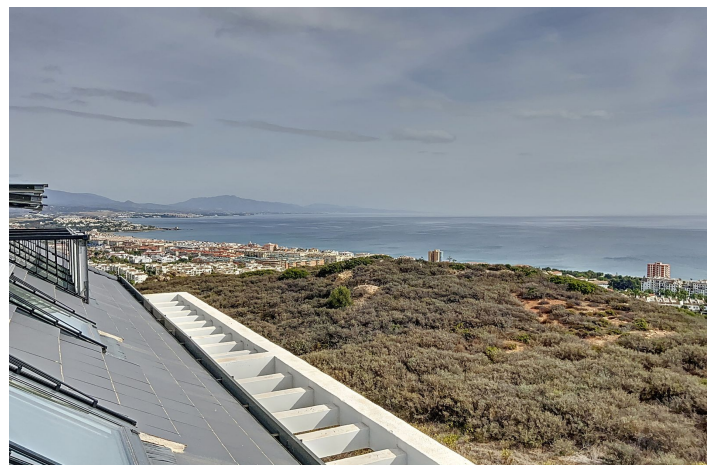
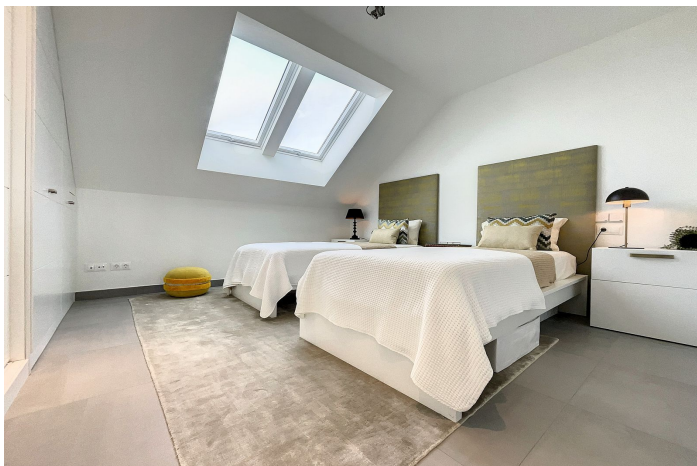


Top Floor Apartment for sale in Manilva, Manilva

285,000 €

Reference: R4660306 Bedrooms: 2 Bathrooms: 2 Build Size: 195m<sup>2</sup>



---

## Costa del Sol, Manilva

This luxurious penthouse is located in the beautiful area of Manilva, Malaga. With its stunning sea and country views, this property offers a truly unique living experience. The penthouse features 2 spacious bedrooms and 2 modern bathrooms, providing ample space for comfortable living.

The interior of the penthouse spans across 88m<sup>2</sup>, offering a generous amount of living space. The property is classified as luxury and is exclusively listed with our agency. It is a new built property, ensuring that it is in excellent condition and ready for immediate occupancy.

The penthouse is equipped with a range of desirable features. The double glazing throughout the property provides sound insulation and energy efficiency. The video entrance system ensures added security and peace of mind. The gated community offers a safe and private environment for residents.

The penthouse also boasts panoramic views of the surrounding area, including the sea, country, and street views. The balcony provides the perfect spot to relax and enjoy the breathtaking scenery. For those who enjoy outdoor activities, the property is conveniently located close to the sea/beach and golf courses.

Optional furniture is available, allowing buyers to customize the interior to their personal taste. The individual A/C units provide climate control for each room, ensuring comfort throughout the year. The property also features an armored door for added security.

In summary, this luxury penthouse in Manilva, Malaga offers a combination of modern living, stunning views, and convenient location. With its spacious interior, desirable features, and excellent condition, this property is a perfect choice for those seeking a luxurious and comfortable lifestyle.

## Features:

### Features

Lift  
Near Transport  
Satellite TV  
Ensuite Bathroom  
Fitted Wardrobes  
WiFi  
Fiber Optic

### Views

Sea  
Mountain  
Panoramic  
Country

### Furniture

Optional

### Utilities

Electricity  
Drinkable Water  
Telephone

### CO2 Emission Rating

B

### Orientation

South  
South East

### Setting

Close To Town

### Kitchen

Partially Fitted

### Category

Investment  
Luxury

### Climate Control

Air Conditioning  
Cold A/C  
Hot A/C

### Condition

Excellent  
New Construction

### Security

Gated Complex  
Entry Phone

### Energy Rating

B