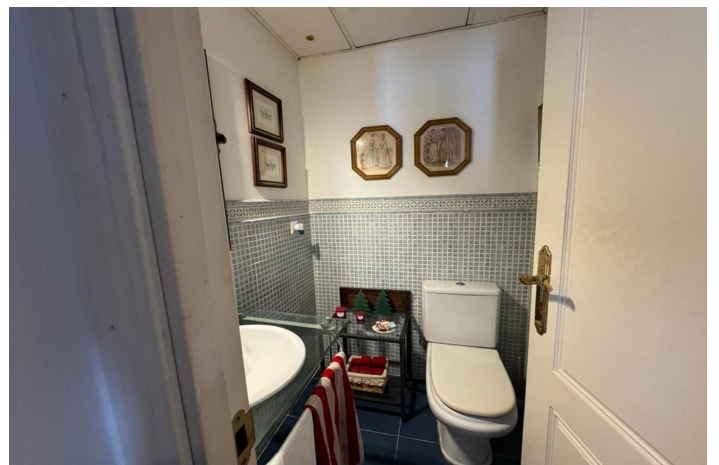


# Townhouse for sale in Nueva Andalucía, Marbella

800,000 €

Reference: R4599370 Bedrooms: 4 Bathrooms: 4 Build Size: 145m<sup>2</sup> Terrace: 30m<sup>2</sup>



---

## Costa del Sol, Nueva Andalucía

Welcome to this Andalusian duplex-style townhouse, located next to the golf course in the sought-after area of Aloha, in the La Retranca urbanization next to Aloha College and all services, in addition to being very close to the sea and Puerto Banus.

Here you will find an ideal location close to amenities and everything you need for a comfortable lifestyle.

This semi-detached house is distributed over two floors and offers the following fantastic distribution:

On the upper floor you will find four large bedrooms and three bathrooms that function perfectly. This is a perfect solution for families or for those who want additional space for guests or working from home. Here you can find everything you need for a comfortable and harmonious daily life.

The large open floor plan for the living room and dining room exudes light and space. The upper terrace is something really extra, with an integrated barbecue and lounge area. Here you can enjoy moments of relaxation and wonderful outdoor dinners. Sliding doors create a smooth transition between inside and outside, creating an atmosphere of freedom and openness.

On the lower floor you have access to a terrace with a garden area. This terrace can be accessed from both ground floor bedrooms and offers a quiet place to enjoy the green surroundings and mild climate.

This townhouse is truly a gem and has everything you need for a comfortable and harmonious lifestyle. If you are looking for a home where you can enjoy and have access to the golf course and nearby amenities, this is the place for you.

Contact us today to book a viewing and experience for yourself everything this fantastic home has to offer. Available now exclusive for long term rent or sale.

## Features:

### Features

Covered Terrace  
Ensuite Bathroom  
Fitted Wardrobes  
Guest Apartment

### Views

Sea  
Mountain  
Golf

### Pool

Communal

### Garden

Communal

### Utilities

Electricity

### Orientation

South

### Setting

Close To Golf  
Urbanisation  
Close To Shops  
Close To Town  
Close To Schools  
Frontline Golf

### Furniture

Fully Furnished

### Security

Alarm System  
Electric Blinds  
Entry Phone

### Category

Golf

### Climate Control

Air Conditioning  
Pre Installed A/C  
Cold A/C  
Hot A/C

### Condition

Excellent

### Kitchen

Fully Fitted

### Parking

Private  
Covered