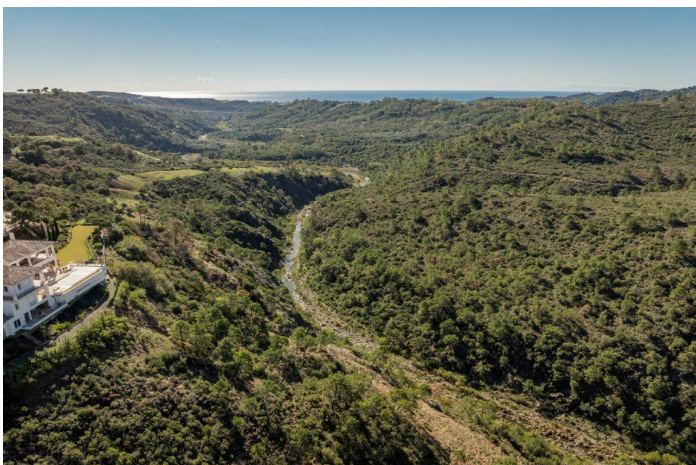
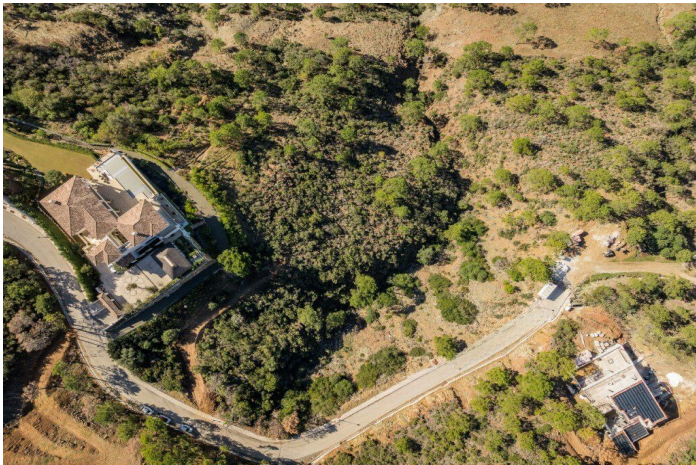


# Land for sale in Benahavís, Benahavís

249,000 €

Reference: R4825330 Plot Size: 4,600m<sup>2</sup> Build Size: 552m<sup>2</sup>



---

## Costa del Sol, Benahavís

This exceptional 4,600 square meter plot is located in the highly sought-after Montemayor Urbanization, a gem within the prestigious Benahavís, Spain's most affluent village. Renowned for its exclusive residences and tranquil surroundings, Montemayor offers a unique blend of natural beauty and secure living, making it one of the most desirable destinations on the Costa del Sol.

Imagine building your dream home in this idyllic setting, where the plot's generous size and approved building rights of 561.20 square meters provide the perfect canvas for an extraordinary project. Whether you envision a modern architectural masterpiece or a timeless Mediterranean villa, this plot allows for a creation that harmonizes with its natural surroundings, while enjoying all the comforts of an elite urbanization.

Facing west, the plot bathes in the golden hues of the Andalusian sunsets, offering breathtaking views that stretch across the verdant landscape. Here, life moves at a gentle pace, where the tranquil lifestyle, unbeatable climate, and unparalleled gastronomy of the Costa del Sol invite you to unwind and savor every moment.

Safety and privacy are paramount in Montemayor, with 24-hour surveillance, security cameras lining the streets, and a concierge at the entrance, ensuring peace of mind for its distinguished residents. Despite its secluded ambiance, the urbanization is just a short drive from the vibrant life of Marbella, world-class golf courses, and the stunning beaches that define this coastal paradise.

This is not just a plot; it is an opportunity to create a legacy in one of Spain's most exclusive enclaves. Here, amidst the natural splendor and elite surroundings, you can build a home that reflects your vision, a haven of luxury, and a place where every day feels like a retreat.

In Montemayor, Benahavís, it is possible to live in the heart of nature without compromising on security or sophistication.

**Features:**

**Orientation**

West

**Views**

Mountain

Panoramic

Country

**Setting**

Close To Golf

**Security**

24 Hour Security

**Category**

Luxury