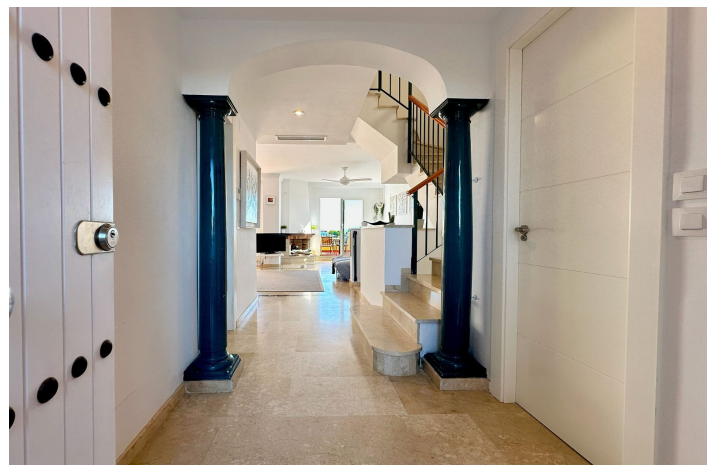


Duplex for sale in Manilva, Manilva

345,000 €

Reference: R4831531 Bedrooms: 3 Plot Size: 60m² Build Size: 250m² Terrace: 60m²



Costa del Sol, Manilva

Spectacular Duplex with stunning sea and mountain views, in Manilva.

This magnificent duplex, located in the sought-after area of La Vizcaronda in Manilva, Malaga, offers a perfect space for those looking for a spacious and well-located home. With a total built area of 250m² and 213m² of interior space, this property guarantees privacy and is ideal for families or as a second home.

The property boasts three spacious bedrooms, two full bathrooms and a guest toilet, ensuring comfort for all residents. The master bedroom enjoys an en-suite bathroom, with beautiful sea and mountain views, and a private terrace to enjoy the morning sun. The kitchen is fully equipped and refurbished with direct access to a spacious garden, ideal for families with children or pets. Interior features include marble floors, hot and cold central heating, and double-glazed windows, ensuring excellent comfort in winter and summer.

The duplex is fully furnished and features a design that maximises the panoramic sea and mountain views. The 60m² private terrace is an exceptional space to enjoy the tranquillity of the natural surroundings. Furthermore, the property is situated in a gated community with several communal swimming pools and tropical gardens. Ensuring an atmosphere of disconnection and relaxation.

It also has a spacious basement with space for two cars, a gymnasium, a leisure area, etc.

The location is unbeatable, with proximity to beaches, golf courses, ports and schools. It is also just a few minutes away from leisure areas such as bars and playgrounds, making it an ideal place for the whole family. The property is in excellent condition, ready to move into, and offers unrivalled sea, mountain, garden and pool views, providing a unique living experience on the Costa del Sol.

Features:

Features

Covered Terrace
Near Transport
Private Terrace
Marble Flooring
Double Glazing
Fitted Wardrobes

Views

Sea
Mountain
Panoramic
Country
Pool

Pool

Communal

Garden

Private
Easy Maintenance

Orientation

South East

Setting

Urbanisation
Close To Town
Close To Schools
Town

Furniture

Fully Furnished

Security

Alarm System

Climate Control

Air Conditioning
Cold A/C
Hot A/C

Condition

Excellent

Kitchen

Fully Fitted

Parking

Garage
Private
Covered
More Than One

Category

Resale